

Installation Instructions

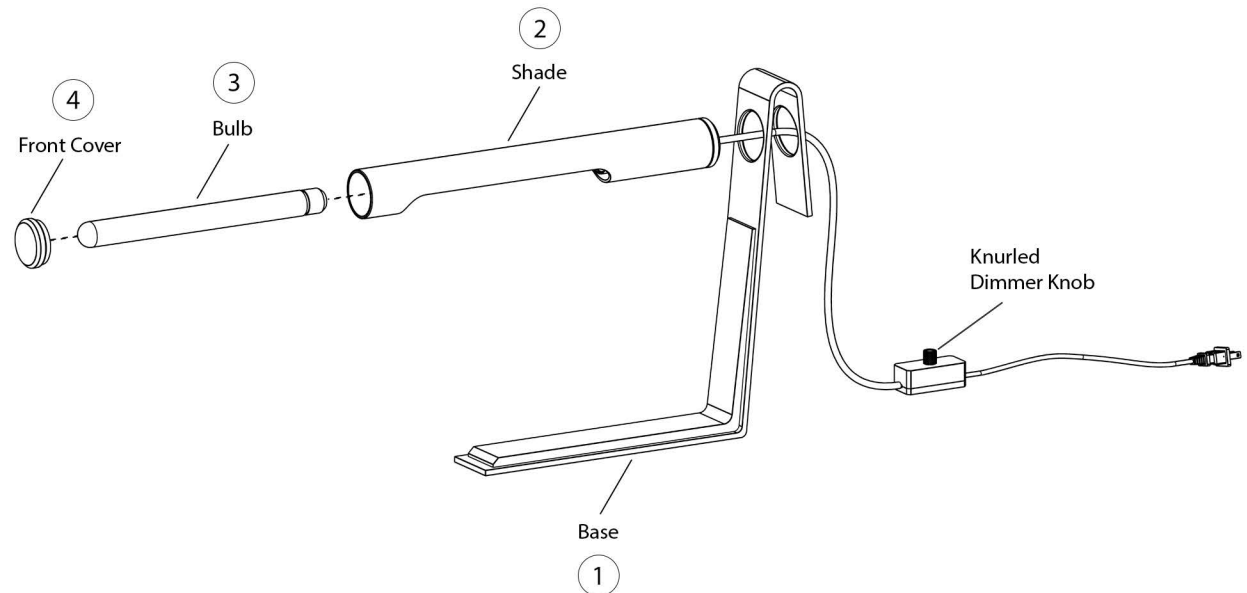
Tourville Table Lamp

Important Safety Instructions

- Turn off all power to the Junction Box before making any electrical adjustments.
- Always disconnect the power before installing/replacing bulbs, during cleaning or maintenance.
- To avoid the risk of fire, do not exceed the recommended wattage.
- Consult a qualified, licensed electrician before installation.

To Assemble

1. Gently lift the lamp body out of the packaging and place on protected surface.
2. Carefully slide the shade through the base openings until it sits securely. Make sure the tubing sits on the closed portion and not in the cutout of the bulb.
3. Screw in the bulb. *Do not over-tighten the bulb.*
4. Align the front cover with the open end of the shade and gently screw it into place.
5. Plug in the cord and rotate the dimmer knob to confirm the bulb is getting power.



Care Instructions

- Wipe with a soft cloth. Do not use chemical cleaner.

*We recommend installation by a licensed electrician

Electrical: 1 x E26 3.5W LED bulb only