

# Installation Instructions

## Valette Linear Chandelier

### Important Safety Instructions

- Turn off all power to the Junction Box before making any electrical adjustments.
- Always disconnect the power before installing/replacing bulbs, during cleaning or maintenance.
- To avoid the risk of fire, do not exceed the recommended wattage.
- Consult a qualified, licensed electrician before installation.

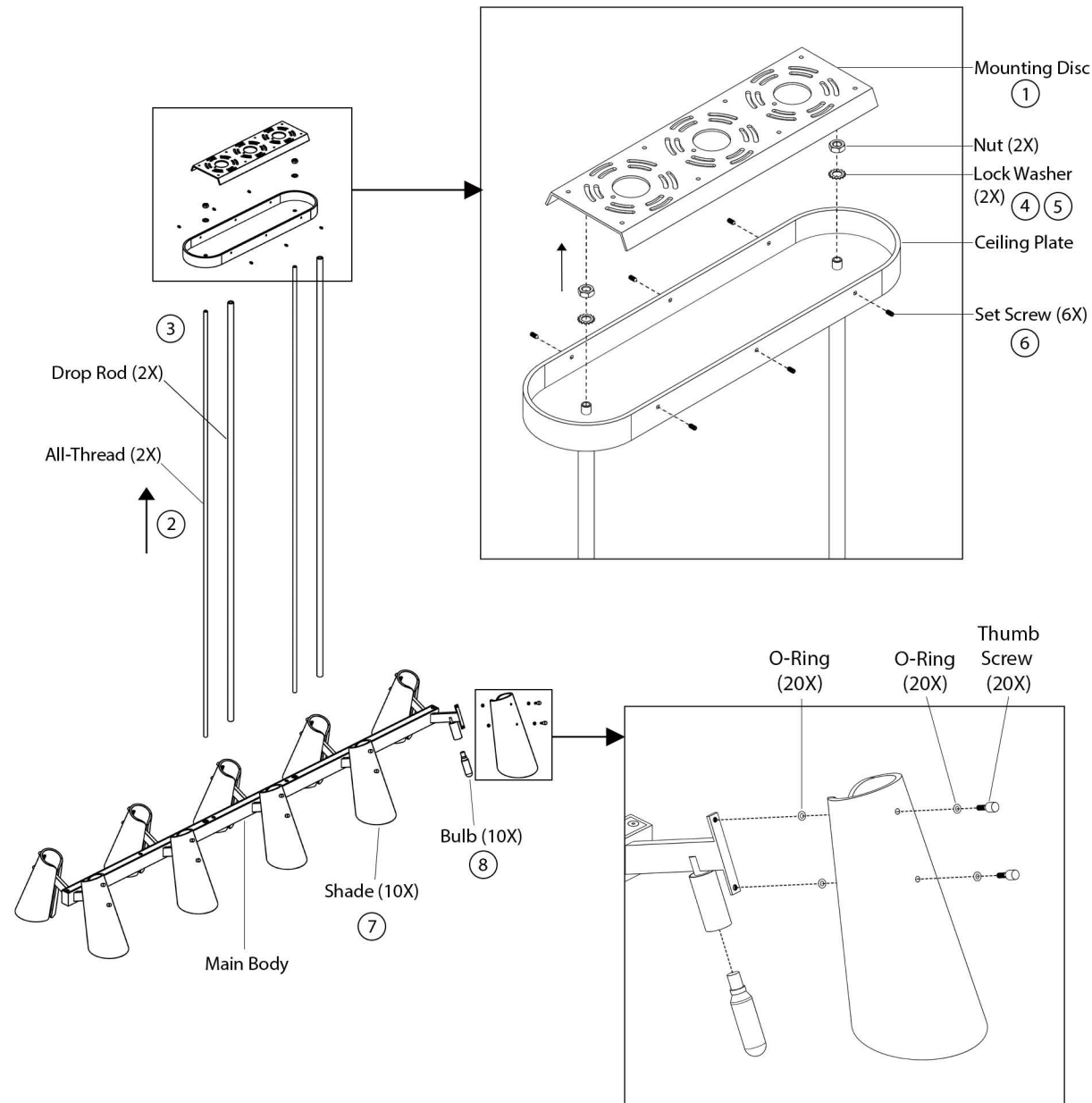
### To Assemble

1. Install the beveled mounting disc to the J-box using the supplied machine screw hardware (2X).
  2. Feed the electrical wires through the all thread. Then, attach the all-thread (2X) to the main body and slide the drop rod (2X) over it, flush with the main body.
  3. There should be 1/2" of all thread above the tubing cover. If not, loosen the set screws and adjust. Secure the all threads by tightening the set screws (2X) on the main body.
  4. Slide the canopy onto the all threads until flush with the tubing cover. Tighten the provided lock washers (2X) and nuts (2X) to make a secure connection.
  5. Connect the wires from the chandelier to those from the J-Box using the Wago wire connectors.
  6. Loosen the set screws and push the ceiling plate over the mounting disc, flush with the ceiling and tighten the set screws (6X) using the supplied allen key.
  7. Slide the shades (10X) over the main body and secure in place using the supplied o-rings (40X) and thumb screws (20X). Please ensure that one washer is placed inside the shade and the other on the outside.
  8. Screw in the bulbs (10X).
- \*DO NOT OVERTIGHTEN THE BULBS\***

### Care Instructions

- Wipe with a soft cloth. Do not use chemical cleaner.

\*We recommend installation by a licensed electrician



Electrical: 10 x E12 4W LED bulb only