

Installation Instructions

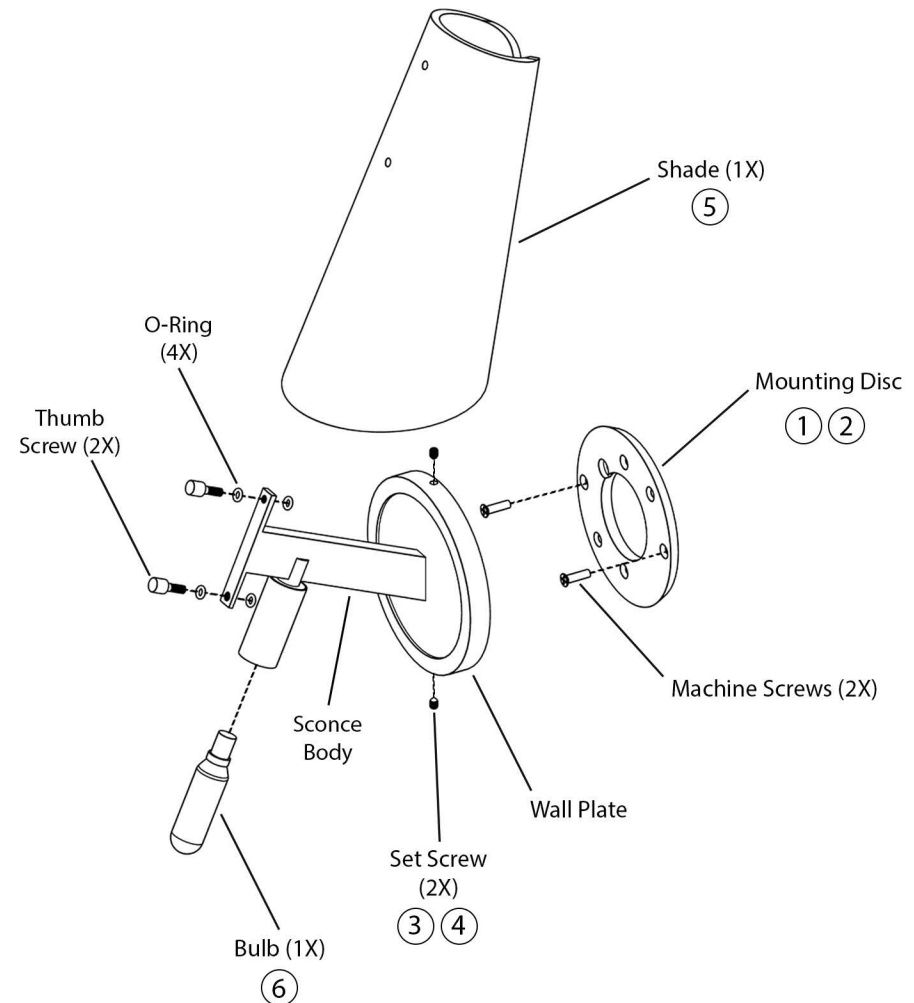
Valette Sconce

Important Safety Instructions

- Turn off all power to the Junction Box before making any electrical adjustments.
- Always disconnect the power before installing/replacing bulbs, during cleaning or maintenance.
- To avoid the risk of fire, do not exceed the recommended wattage.
- Consult a qualified, licensed electrician before installation.

To Assemble

1. Install the beveled mounting disc to the J-box using the supplied mounting screw hardware (2X).
2. Hold the wall plate next to the J-Box, and connect the wires to those in the J-box using the Wago wire connectors.
3. Loosen the set screws (2X) at the 12:00 and 6:00 position on the sconce wall plate and press the sconce over the mounting disc, flush with the wall.
4. Level the sconce and tighten the set screws (2X) to finalize the installation.
5. Slide the shade (1X) over the sconce body and secure in place using the supplied o-rings (4X) and thumb screws (2X). Please ensure that one washer is placed inside the shade and the other on the outside.
6. Screw in the bulb (1X).
DO NOT OVERTIGHTEN THE BULBS
7. Turn on the power to confirm you have made good wire connections.



Care Instructions

- Wipe with a soft cloth. Do not use chemical cleaner.