

Installation Instructions

Alouette Linear & Vanity Sconce

Important Safety Instructions

- Turn off all power to the Junction Box before making any electrical adjustments.
- Always disconnect the power before installing/replacing bulbs, during cleaning or maintenance.
- To avoid the risk of fire, do not exceed the recommended wattage.
- Consult a qualified, licensed electrician before installation.

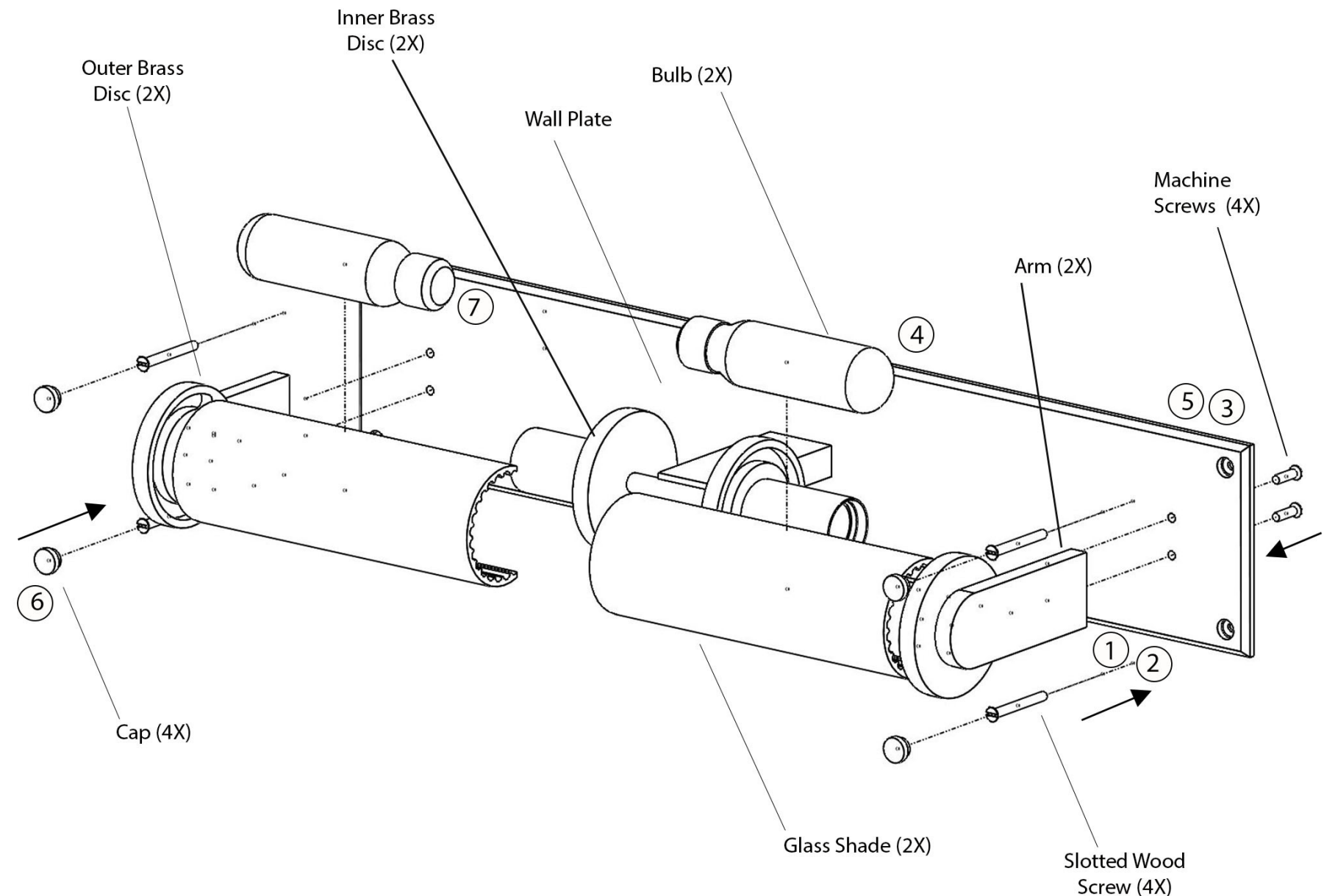
To Assemble

1. Place the Glass Shade into the Inner and Outer Brass Discs. Hold the Arm near the Wall Plate and fasten the sub assembly together with the provided Machine Screws (2X).
2. Repeat Step 1 for the next Glass Shade.
3. Hold the sconce body on the wall and mark out the 4 pilot holes. Ensure the sconce is level.
4. Hold the sconce body next to the J-Box, and connect the wires to those in the J-box using the wire nuts.
5. Install the sconce body to the wall using blocking or anchoring (not provided) and flush with the wall.
6. Once the sconce body is secure to the wall, press on the provided caps (4X).
7. Screw in the bulbs (2X) in place. *DO NOT OVERTIGHTEN*
8. Turn on the power to confirm you have made good wire connections.

Care Instructions

- Wipe with a soft cloth. Do not use chemical cleaner.

*We recommend installation by a licensed electrician



Electrical: 2 x E26 40W - 120W Max - LED Available