

Installation Instructions

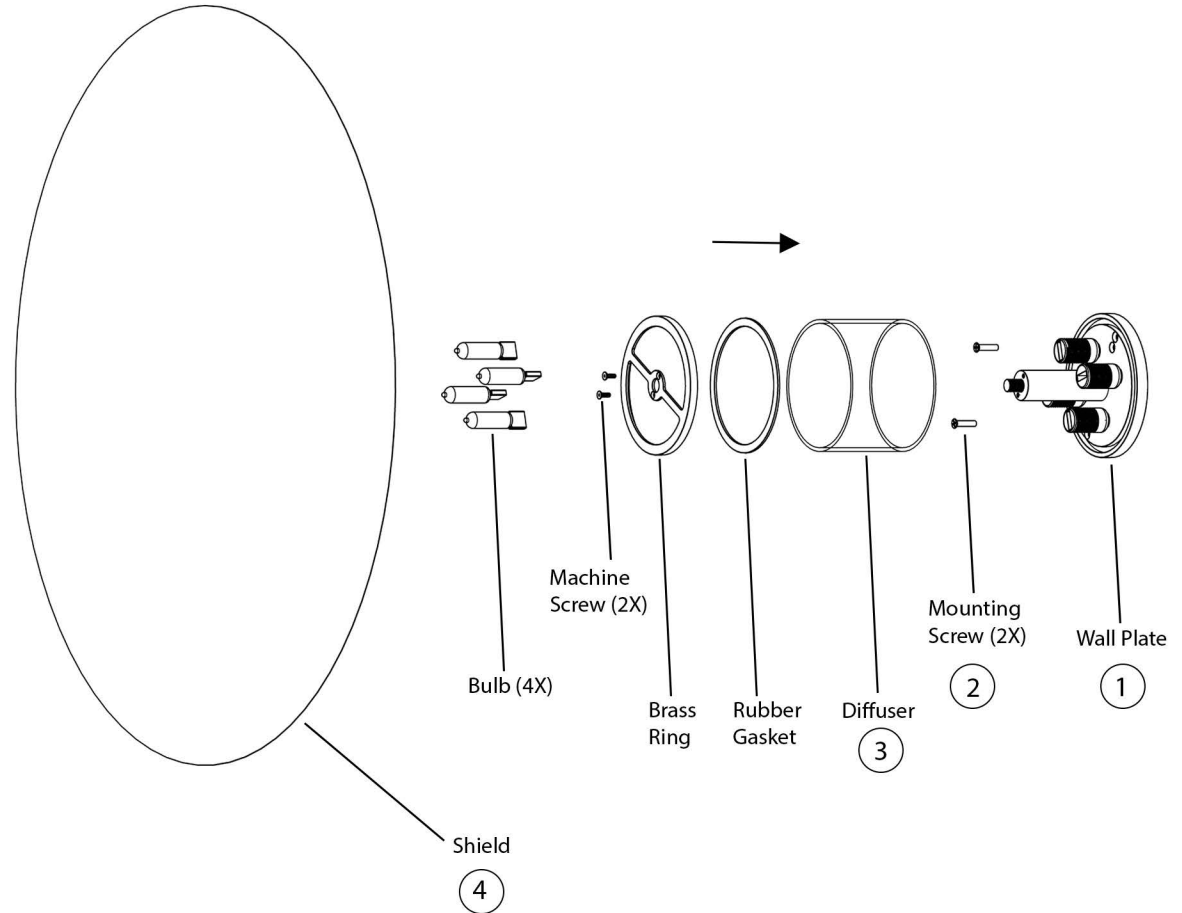
Shield Sconce 24"

Important Safety Instructions

- Turn off all power to the Junction Box before making any electrical adjustments.
- Always disconnect the power before installing/replacing bulbs, during cleaning or maintenance.
- To avoid the risk of fire, do not exceed the recommended wattage.
- Consult a qualified, licensed electrician before installation.

To Assemble

1. Connect the wires to those in the J-box using the Wago wire connectors.
2. Use provided mounting screw hardware (2X) to secure the wall plate assembly into the J-Box, flush with the wall.
3. Center the glass diffuser over the wall plate. Place the gasket along the edge, then secure the brass ring using the provided screws (2X).
4. Carefully hold the casting level and thread it onto the light assembly. Be careful not to cross-thread during installation — the casting is heavy. Hand-tighten only, using minimal force.
5. Turn on the power to confirm you have made good wire connections.



Care Instructions

- Wipe with a soft cloth. Do not use chemical cleaner.